



COMMUNITY OF CHAMPIONS

United
Way



United Way of
Southwestern Pennsylvania

2022 REPORT TO THE COMMUNITY
JULY 2021 - JUNE 2022



Dear Friends,

The past year served up more than its fair share of challenges and crises. The pandemic entered its third calendar year, finally subsiding a bit but continuing to threaten lives and add more complexity to daily routines.

A horrible conflict in Ukraine and historic inflation at home added a new level of suffering and uncertainty for people who were just starting to contemplate a return to normalcy.

Through it all, donors like you have made it possible for United Way of Southwestern Pennsylvania to help people meet basic needs, move families toward financial stability, and help our youth build for success in school and life. United Way's 211 helpline fielded more than 420,000 requests from individuals who often had no other place to turn when the shelves were empty or the power was turned off.

This was also the first complete year our new strategic plan and recommitment to diversity, equity and inclusion rolled out completely. We're happy to report that we have achieved most of our first-year targets, and our dashboard has kept our entire staff and agency partners accountable to deliver against key metrics. Among many major accomplishments is our new regionwide Request for Proposal process that is helping ensure we continue to drive toward our strategic goals throughout our five-county footprint.

Thankfully, we have more or less returned to in-person volunteering and events. Perhaps most noteworthy was the 20th Anniversary Celebration of Women's Leadership Council which was held in February. The evening's hoopla and celebration were only surpassed by the impact this dynamic group continues to make on our community. More than \$9 million was raised under the leadership of co-chairs Stephanie Sciuлло and Kerri Brown!

As you study the details of this annual report, keep in mind that United Way was able to increase core campaign revenue by 7% while working under the in-person restrictions and economic challenges of the pandemic. That requires a Herculean effort



by our staff who—just like workers everywhere—have had to adjust to factors outside their control. We have thoughtfully updated and carried out personnel policies that support their efforts and recognize their importance and value.

Thank you for your support of United Way. Because of you, we are truly a Community of Champions!

Bobbi Watt Geer,
President and CEO, Ph.D.
United Way of Southwestern Pennsylvania

Robert A. DeMichiei
Chair, Board of Directors
United Way of Southwestern Pennsylvania

A STREAMLINED PROCESS TO DRIVE MORE EQUITABLE IMPACT

Faced with unprecedented need in the community, United Way of Southwestern Pennsylvania continues to simplify our grantmaking process to expeditiously and efficiently meet the needs of our neighbors. Beginning in 2022, all non-profit partners across our five-county footprint will submit requests for three-year funding on the same timeline, eliminating multiple applications and giving our volunteer reviewers and staff full visibility into our community investments.

Reducing this administrative burden also ensures that United Way funding is more accessible to smaller agencies, including those led by and serving diverse communities. **Creating equitable opportunity has always been core to our mission.** Now we are doubling down on that commitment by requiring all applicants to demonstrate how they listen to and build trust with the communities they serve; be inclusive of populations based on individual and collective identities; and most importantly, how their programs advance equity.

As always, local dollars stay local. And by streamlining this grantmaking process and increasing the reach of our partners, United Way makes those dollars go farther to meet basic needs, move people toward financial stability, and build for success in school and life.



Kenyon Bonner
Co-Chair, United Way
of Southwestern
Pennsylvania's Impact
Cabinet

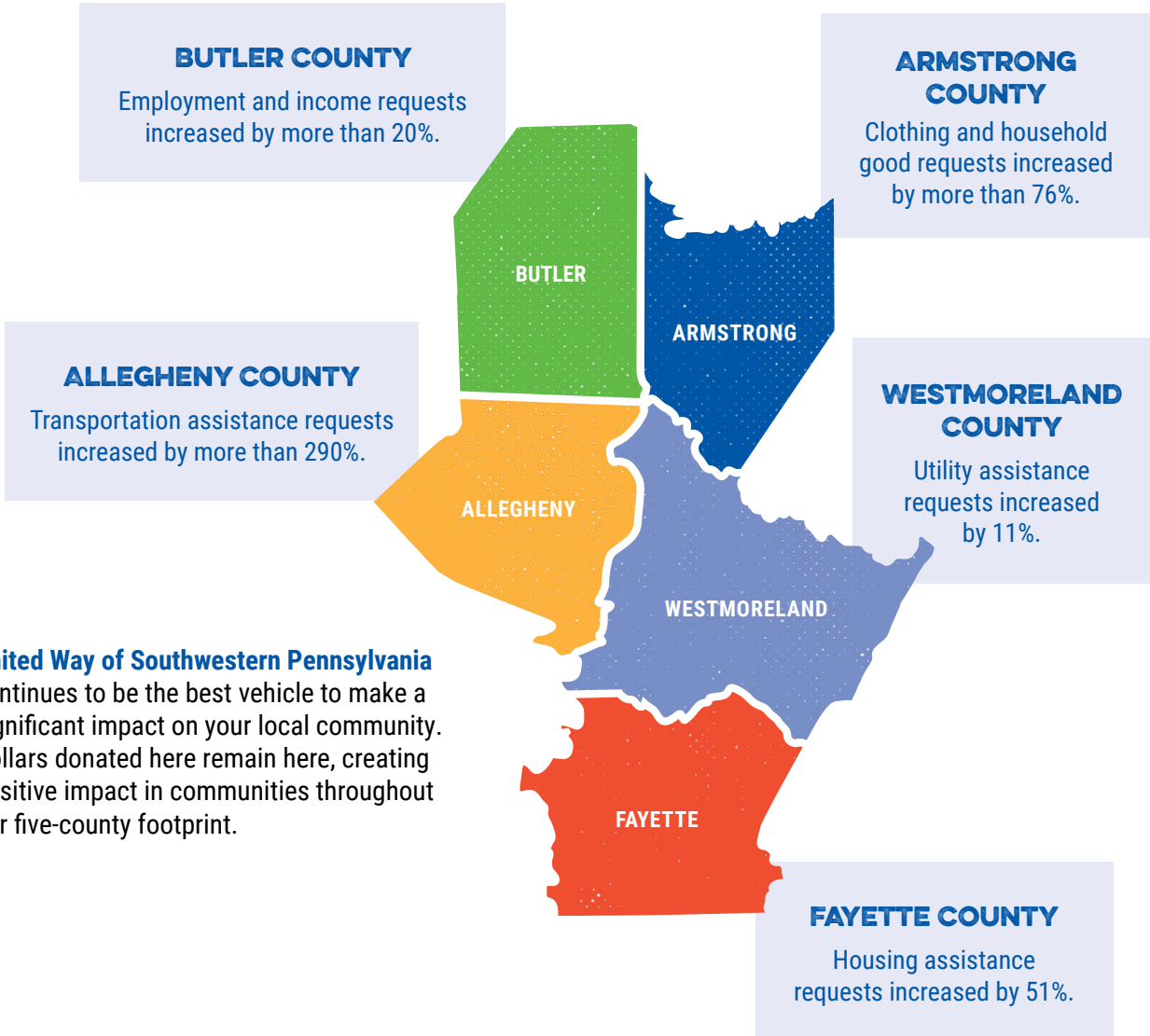
"We are always looking for ways to more efficiently and effectively meet the need in our community. Reducing barriers to funding will benefit those partners with whom we have worked in the past and foster new and innovative partnerships, especially with organizations that may have thought United Way funding was out of reach for them."



Albert Novak
Co-Chair, United Way of Southwestern
Pennsylvania's Impact Cabinet

"Creating equitable opportunity is embedded within our work and our DNA at United Way. This new approach gives us the tools and information we need to deepen our engagement across the region and improve the lives of our neighbors."

SERVING THE NEEDS OF THE ENTIRE REGION



United Way of Southwestern Pennsylvania continues to be the best vehicle to make a significant impact on your local community. Dollars donated here remain here, creating positive impact in communities throughout our five-county footprint.



MEETING BASIC NEEDS EVERY DAY

THIS PAST YEAR IN SOUTHWESTERN PA:



When a family faces the prospect of eviction or the utilities have been turned off on a wintery day, it's hard to know where to turn. For hundreds of people struggling to meet basic needs, the first call is to United Way's PA 211 Southwest helpline.

United Way's highly trained resource navigators help individuals in extremely stressful circumstances sort through often complicated situations and get them connected to the right resources in their area. Then we follow-up to make sure that not only the immediate crisis was averted, but that they have the tools and support to change their situation.

Last year, PA 211 resource navigators fielded requests from more than 420,000 individuals in southwest, northwest, and southeast Pennsylvania.

1,231

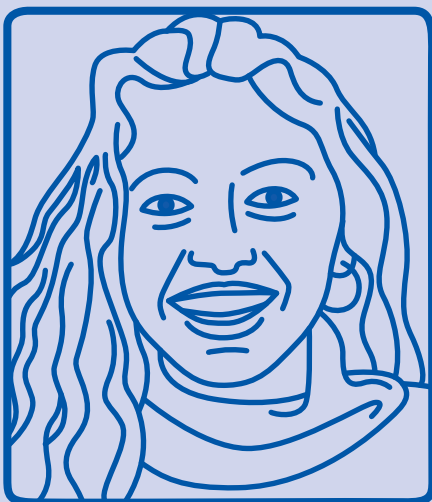
people accessed
emergency shelter
when faced with
homelessness

41,719

meals were distributed
to students and
families throughout
our region

1,327

individuals and
families received
one-time emergency
financial assistance



The bottom had dropped out.

For the first time, Kimberley did not know where to turn. For several years, she had supported her ailing mother on a modest salary as an office assistant. The 24-year-old Brookline native was barely able to make ends meet, but she confidently helped manage her mother's health and kept their shared apartment neat and tidy.



Then in the first weeks of the pandemic shutdown, Kimberley lost her job and everything started to unravel. Bills piled up, and she was unable to replace her income. By the end of the year, her savings were completely depleted and after missing her rent for the first time, Kimberley feared eviction.

On the advice of a friend, she dialed United Way's PA 211 Southwest helpline. "My mom and I had always looked after each other," Kimberley said. "Now I needed 211 to help look after me."

A United Way 211 resource navigator helped talk her through her complicated (but not entirely unique) circumstance. Thousands of individuals throughout Southwestern Pennsylvania had accessed 211 during the pandemic for basic needs such as food and utility assistance.

After searching for programs that Kimberley would be eligible for, the resource navigator assigned her case to the YWCA of Greater Pittsburgh's Women's Impact Network (WIN). This interagency partnership provides basic needs assistance and a full package of stabilizing support for women in crisis.

United Way's 211 also connected Kimberley with other services including assistance with job searches, food and reduced-cost internet service. In the next few days, the navigator checked in to make sure Kimberley had followed up and ensured she had received her \$500 WIN assistance to pay her rent.

It was a difficult year for just about everyone but thanks to United Way's 211, Kimberley was able to avoid a devastating crisis for her and her mother. "I couldn't be more grateful and more relieved," Kimberley said.



United Way's PA 211 Southwest has become more than a helpline for our community. Their reputation for professional service and empathy has earned the trust of the rest of Pennsylvania. Since 2015, Philadelphia and surrounding counties have contracted our 211 as their helpline to address complicated issues like preventing gun violence. Now 211 has become the front door for critical human services in the vast majority of the Commonwealth.

In addition to connecting thousands of people to essential services every day, 211 has become a driving force for United Way to innovate solutions for the evolving needs of our community.

For Children's Hospital of Pittsburgh

An undervalued aspect of health care is transportation to and from medical care appointments. To bridge this gap for families in need, United Way partnered with Children's Hospital of Pittsburgh to create Ride United. Parents or caregivers could schedule Lyft rides through 211 for kids to get to their medical appointment free of charge. On average, Ride United saves area families approximately \$10,000 every month in transportation costs.

For Westmoreland Residents in Need

United Way's 211 resource navigators don't just wait for people in need to contact them. This past year, we took our expertise on the road to Westmoreland County's Resource Day to assist individuals and families who were affected during Covid-19 and needed rent and utility assistance. There, we helped people apply for Emergency Rent and Utility Assistance (ERAP) to avoid preventable hardship.

For People with Disabilities

Whenever possible, United Way's 211 matches clients to resource navigators with similar backgrounds or specific training. Non-English speakers are connected to navigators who speak their language. Veterans prefer to work with other veterans. Thanks to the Edith L. Trees Foundation, we were able to fund a specialist in helping people with disabilities and mental health issues. This specific resource allowed 211 to greatly expand our database and network to help more people in our region.

For the Health of Allegheny County

Coming out of Covid-19, Allegheny County Department of Health decided to continue contracting United Way's 211 to serve as their front door for human service needs. This unique public-philanthropic partnership allows the residents of Allegheny County to benefit from 211's outstanding database and resource network. The result: a more efficient and user-friendly system that lowers stress for someone in crisis.

United Way partners with businesses and organizations that value Diversity, Equity, and Inclusion initiatives.



**BUILDING FOR SUCCESS IN SCHOOL & LIFE
WITH JOY AND LEARNING**



The past few school years have been difficult and disruptive for nearly every family with children. For students in underserved areas however, the historic inequities of educational resources and access were made even more apparent.

United Way of Southwestern Pennsylvania worked with other local funders and nonprofit agencies to make sure the summer months provided a welcome and fun respite from the stresses of uncertainty and isolated learning.

Students from PreK to 12th grade were invited to participate in *Welcome Back! Summer 2022*. United Way helped to fund programs and recruit quality staff to engage students in fun, enriching activities. Students also went on exciting field trips to area parks, cultural events and museums.

Welcome Back! Summer 2022 not only made the long summer days fun for hundreds of children, it worked to slow learning loss and better prepare students to succeed when they return to school in the fall.

THIS PAST YEAR IN SOUTHWESTERN PA:

98,288

kids had access
to programs and
resources for
academic success

11,157

young learners
registered for
kindergarten in 52
school districts

33,173

high-quality books
were distributed
across the region



Meet Gavin.

Like just about any 12-year-old you've had in your life, Gavin is figuring out his place in the world. Living with his grandmother Caryn in the Homewood section of Pittsburgh, Gavin enjoys many of the things most kids do—video games and playing outdoors when possible—but his real passion has always been building things with Legos.



“Gavin is an outstanding grandson,” Caryn says proudly. “He’s quiet, kind and easy going. Sometimes children like Gavin fall by the wayside.”

In kindergarten, Caryn was able to enroll him in Homewood Children’s Village (HCV) which is supported by United Way of Southwestern Pennsylvania. Founded in 2010, HCV works to improve the lives of Homewood-area children and reweave the fabric of the community by providing direct services to students and their family.

At HCV, Gavin received the encouragement and positive structure where he could flourish. He was able to engage in S.T.E.M. projects that stimulated his interest in building structures. “I like testing mechanics and technology,” Gavin said. “I want to be a structural engineer one day.”

Gavin also found his niche as a student helper in HCV’s Pride Store, where children can redeem accomplishments such as positivity and good behavior for pride badges and mementos. “I help open boxes and stock merchandise,” Gavin said.

Thanks to funding from United Way, HCV is able to support the needs of the families of students as well. “We provide direct services to children and families,” says Walter Lewis, President and CEO of Homewood Children’s Village. “Whether that means connecting people to job opportunities or helping them get access to food.”

“The HCV is not just for children. They are family,” Gavin’s grandmother Caryn added.

During the pandemic when many students struggled with distance learning, HCV helped get Gavin a desk for home and made sure he was staying on track.

“I was so proud when he won an academic award during that time,” Lewis said.

United Way is proud to partner with Homewood Children’s Village to help bright and deserving students realize their dreams. “Funding from United Way gives us the flexibility to try and do different things for our students like our Pride Store,” Lewis said.

As students like Gavin have discovered, that’s something they can really build on.

[Hear Gavin and Caryn’s story yourself at USWPA’s YouTube Channel.](#)



**MOVING TOWARD FINANCIAL STABILITY
WITH INNOVATIVE PROGRAMS**



In the U.S., women (and especially women of color) are more likely to live below the poverty line than men. Gender and racial bias in employment plays a significant role, but so does the financial and emotional pressure of caring for children and aging parents. In 2021, 68% of grants from United Way of Southwestern Pennsylvania went to women who were struggling with basic human needs.

In an effort to go on the offense, United Way launched an exciting pilot program providing guaranteed income for a test group of women trapped in poverty. Earlier this year, the first cohort group of 12 women began receiving a monthly \$500 pre-paid debit card. Along with financial support, participants continued to receive supplemental services and programs at referring agencies.

Their progress is being monitored by the University of Pittsburgh School of Social Work, and the results so far have been extremely promising. To build on this initial success, United Way has begun recruiting a second cohort of women who are currently employed or in a workforce training program.

THIS PAST YEAR IN SOUTHWESTERN PA:

\$13.6M

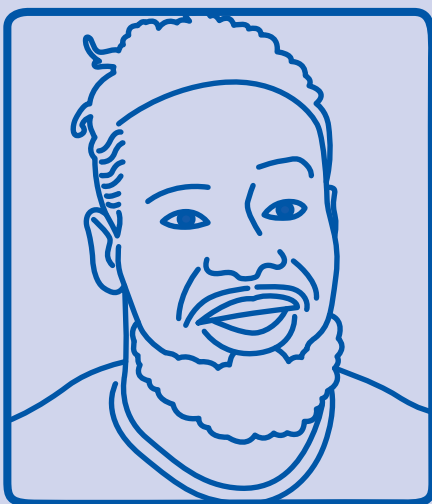
in refunds went to low-income families thanks to free tax preparation

#IWantToWork

campaign helped to lift the income limit for people with disabilities

1,221

people were connected to resources and employment opportunities



DeeJay found hope where he wasn't expecting.

Growing up, he never imagined a career in the kitchen. Instead, he had dreams of becoming a professional athlete. "But life had other plans for me," DeeJay says.



Early last year, DeeJay was released for good behavior after serving 3½ years of a possible seven-years sentence. “While I was incarcerated, I worked in the kitchen and went to school,” DeeJay explained, flashing his electric smile and showing his friendly demeanor. “I like to play chess. Play video games. Read motivational books.” His latest recommendation is “Think and Grow Rich” by Napoleon Hill.

After serving time in prison, people such as DeeJay face many challenges, specifically finding employment. While incarcerated, DeeJay remembered a pamphlet that caught his eye from Community Kitchen Pittsburgh, an agency supported by United Way of Southwestern Pennsylvania. He soon enrolled in the 14-week program that trains struggling individuals to join the culinary workforce.

Jennifer Flanagan, executive creative director and founder of Community Kitchen, explains their mission. “There are two pieces: Hunger relief for people in the community experiencing food insecurity... and culinary workforce training. We integrate those two so our trainees are involved in the daily production of meals.”

Simply put, “People need to eat, and people need jobs,” Flanagan says.

The supportive culture and high standards of Community Kitchen help men and women like DeeJay develop both precise culinary skills as well as “soft skills” and interpersonal relations tools.

DeeJay now has a direction and a clear career path. He works as a prep cook at The Porch at Schenley.

More importantly, he has belief in himself and feels confident he can provide for his daughter.

“It’s like a family,” says DeeJay. “Community Kitchen is very welcoming and very forgiving. They’ll do everything they can to make sure you’re on the right track. Even when you’re not in school, if they think you’re going off track, they’ll follow up on you.”

United Way’s support allowed Community Kitchen to pivot during the pandemic and provide thousands of meals every day to the community. “So many funders have a priority for a few years then they shift priorities. The needs we are serving don’t go away,” says Flanagan. The problem hasn’t changed. United Way is a convener. They know the agencies that are on the ground doing the work. So I’ve always appreciated that they can connect us with other agencies that complement the work we’re doing.”

[Hear DeeJay and Jennifer’s story yourself at UWSWPA’s YouTube Channel.](#)

VOLUNTEERISM FLOURISHES IN NEW AND EXCITING WAYS

The look and feel of volunteering through United Way has certainly evolved over the past few years, but the impact has never been greater. Whether in person, in front of a classroom, or online, United Way volunteers bring our mission to life with passion, humanity and purpose.



Days of Caring

In May, more than 200 volunteers throughout our region participated in United Way's Days of Caring. After two years of mostly virtual and remote volunteering, the ranks of enthusiastic volunteers are on the rise and so were the results. More than 200 summer kits loaded with educational games, activities and hand sanitizers were packed for area kids. Also, more than 1,750 food boxes were assembled for individuals and families. This year, the boxes included three delicious recipes and a Giant Eagle gift card to access fresh produce and meat.



Be STEMtacular Series

Since 2019, United Way of Southwestern Pennsylvania has partnered with the Arconic Foundation to give students hands-on experience in S.T.E.M. (Science, Technology, Engineering & Math). During remote learning, with the help of the Arconic Foundation, United Way was able to pivot and create a successful online experience thanks to volunteer subject matter experts. These dedicated and enthusiastic volunteers brought real-world experiences in things like coding and robotics into the classroom and inspired children to consider rewarding careers in S.T.E.M. fields.



Navigating the Poverty Spiral

Groups around our area now have a unique opportunity to volunteer their time to build something quite remarkable: empathy. This past year, United Way and The Mentoring Partnership created The Poverty Spiral, an engaging activity that helps participants understand some of the challenges faced by families and individuals living in poverty. Through this interactive simulation, people make real-world choices that have tremendous personal and financial consequences. Spoiler alert: there are rarely easy answers. Moving forward, United Way expects to bring The Poverty Spiral to more groups and companies.

United Way is committed to providing volunteers with meaningful opportunities that incorporate themes of Diversity, Equity, and Inclusion.

BY THE NUMBERS (2021-22)

10,870
total volunteers

4,537
volunteer hours

\$310,218
in-kind value

100,329
people directly served

CELEBRATING 20 YEARS OF WOMEN'S LEADERSHIP

In 2001, five visionary women came together to assert their belief that the best way to make a true impact on the lives of women in the Pittsburgh area was to lead the way themselves. From that first meeting, the Women's Leadership Council was born. Now in its third decade of service, the WLC has grown to include more than 2,300 women leaders from all five counties making it the third largest WLC in the nation!

After nearly two years without in-person events or volunteering, the women of WLC were ready to make some noise. The 20th anniversary gala at the Wyndham Grand Pittsburgh brought together current and future leadership of WLC to enthusiastically celebrate its past accomplishments and eclipse the \$100 million mark for total giving.





EdenHall

FOUNDATION

Special thanks to Eden Hall Foundation

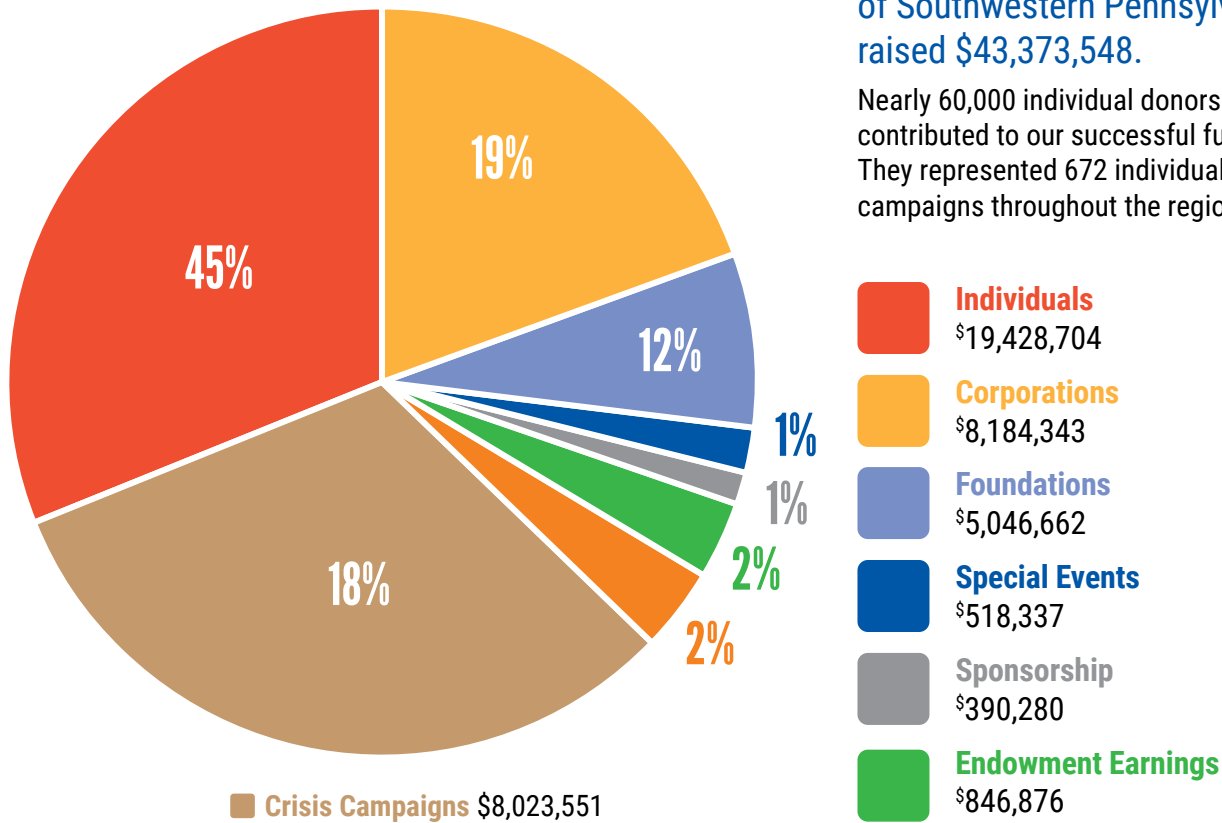
Much of the success of the WLC is in large part due to the generous support of Eden Hall Foundation. Established through the will of Pittsburgh business leader and philanthropist Sebastian Mueller, Eden Hall Foundation is dedicated to impacting the lives of women throughout our community.



Under the leadership of co-chairs Stephanie Sciullo and Keri Brown, more than \$9 million has been raised this past fiscal year by WLC members.

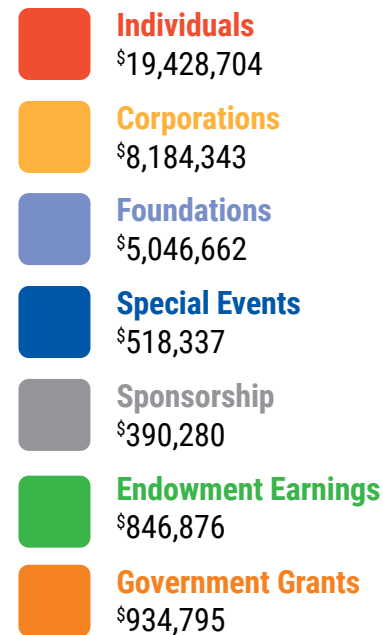


FINANCIAL HIGHLIGHTS – REVENUE



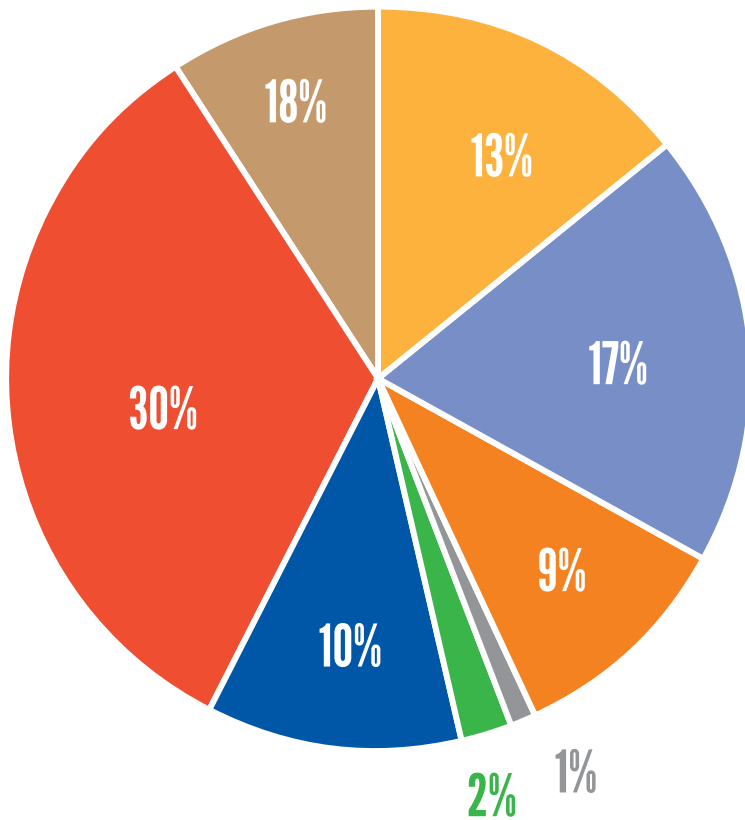
In fiscal year 2021, United Way of Southwestern Pennsylvania raised \$43,373,548.

Nearly 60,000 individual donors contributed to our successful fundraising. They represented 672 individual workplace campaigns throughout the region.



FINANCIAL HIGHLIGHTS – EXPENDITURE

United Way of Southwestern Pennsylvania invested \$39,057,174 into our community.



- **Building for Success in School and Life**
\$5,439,600
- **Meeting Basic Needs**
\$7,550,015
- **Moving Toward Financial Stability**
\$4,091,009
- **Volunteer**
\$632,430
- **Endowment/Admin Restricted**
\$940,459
- **Overhead**
\$4,316,374
- **Community Investment in Non-Partner Agencies**
\$12,380,111

Subtotal	\$35,349,998
Crisis Response	\$8,023,550
Total	\$43,373,548



OUR BOARD OF DIRECTORS

BOARD OF DIRECTORS

Robert A. DeMichiei* (Board Chair)
Retired – UPMC

Will Allen
Will Allen Foundation

Kenneth J. Altemus
Westinghouse Electric Company

Josie Badger, DHCE, CRC
J. Badger Consulting

Leroy M. Ball
Koppers, Inc.

Kenyon R. Bonner, Ed.D.*
University of Pittsburgh

Kenny Bonus, CPA ^
Bonus Accounting

Brooks Broadhurst*
Eat'n Park Hospitality Group, Inc.

Keri Brown
Giant Eagle, Inc.

Christine A. Bryant*
Covestro LLC

Raymond W. Buehler, Jr.*
Schneider Downs

Jayme L. Butcher
Blank Rome

Francine B. Cameron, CPA, MBA
Cameron Professional Services
Group, LLC

Franklin Cardenas+
Kennametal Inc.

Louis R. Cestello*
The PNC Financial Services Group, Inc.

Jeffery P. Craft
Deloitte LLP

Vincent J. Delie, Jr.
F.N.B. Corporation

Michael R. Denove*
EY

Patrick D. Dugan
Retired - Wabtec Corporation

George J. Farah+
FirstEnergy

Sylvia V. Fields
Eden Hall Foundation

Kim Tillotson Fleming, CFA
Hefren-Tillotson, Inc.

Peter J. Germain
Federated Hermes, Inc.

Rev. Glenn G. Grayson, Sr.
Center That CARES

Gretchen R. Haggerty*
Community Leader

Hayley A. Haldeman
Community Volunteer

Richard J. Harshman*
Retired – ATI Inc.

David B. Heaton
The Buncher Company

Diane P. Holder
UPMC Health Plan

Kathy W. Humphrey, Ph.D.
Carlow University

Cynthia Hundorfean
Allegheny Health Network

Stacy M. Juchno
The PNC Financial Services Group,
Inc.

Justin Kaufman
PwC

Rebekah Byers Kcehowski
Jones Day

Katharine Eagan Kelleman
Pittsburgh Regional Transit

Darrin Kelly
Allegheny/Fayette Central Labor
Council, AFL-CIO

John P. Kline+
Mid Penn Bank

Timothy M. Knavish
PPG

Elizabeth E. Krisher, CPA*+
Maher Duessel

Karen L. Larrimer*
Community Volunteer

Dan LaVallee*
UPMC Health Plan

Michael T. Lordi, Esq.+
Retired - Elliott Group

Jeff Mallory, Ed.D.
Saint Vincent College

David J. Malone*
Gateway Financial Group, Inc.

James J. McQuade
Dollar Bank

Laura N.K. Miller, Esq.
UPMC Health Plan, Inc.

Tamra E. Minnier, RN, MSN, FACHE
UPMC

James D. Newell
Buchanan Ingersoll & Rooney

Ronald H. Ott*+
University of Pittsburgh at Greensburg

David A. Panneton ^*
FNB Corporation

Julie A. Patter*
Clark Hill

Jake Ploeger
PJ Dick - Trumbull - Lindy Group

Deborah L. Rice-Johnson*
Highmark Health

Arthur J. Rooney II*
Pittsburgh Steelers Sports, Inc.

Kara Rubio
The Pittsburgh Foundation

Catherine ("Casey") Ryan*
Reed Smith, LLP

Hari Sastry*
University of Pittsburgh

Shannon Schreib^
PPG

Stephanie L. Sciallo
MSA Safety, Inc.

James R. Segerdahl
K&L Gates

Steven D. Thompson, CPA
Schneider Downs

Mark A. Twerdok
KPMG

Tom VanKirk
Retired – Highmark Health

Marc Williams
FedEx Ground

Most Reverend David A. Zubik*
Diocese of Pittsburgh



LOCAL OPERATING BOARDS

BUTLER & ARMSTRONG COUNTIES

David A. Panneton (Board Chair)

FNB Corporation

Kenny Bonus, CPA

Bonus Accounting

Ron Bowser

USW International

Debbie Crum

Butler County Tourism & Convention Bureau

Kim Geyer

County of Butler

Jeannie Gilkey

Clearview Federal Credit Union

Sheri Hershberger

FNB

Janine Kennedy

Community Volunteer

Stan Kosciuszko

Community Volunteer

Dan LaVallee

UPMC Health Plan

Darla Livermore

NexTier Bank

Robi Lombardo

West Penn Power/First Energy

Alice Lunn

Butler Eagle

John Perock

Westinghouse

Steve Powers

Calumet-Penreco LLC

Belinda Richardson, Ed.D.

Butler County Community College

Shannon Schreib

PPG

Erin Stewart

Novo Nordisk Inc.

Jessica Troiano

MSA

Tiffany Trudgen

Freeport Area School District

Donald J. Vigliotti, M.D.

UPMC

WESTMORELAND & FAYETTE COUNTIES

Ronald H. Ott, MPH (Board Chair)

University of Pittsburgh at Greensburg

Elizabeth E. Krisher, CPA

Maher Duessel

Mark E. Myers

West Penn Power

John P. Kline

Mid Penn Bank

Albert J. Novak Jr.

Excela Health

Rosalie Bell

Elliott Group

Robert Brooks

Community Volunteer

Melissa Davis

UPS

Dan DeBone

Westmoreland County Chamber of Commerce

David Ebersole

Westinghouse

Suzanne English

Cathedral Corporation

Jim Frey

Gulf Coast Bank & Trust Co

Alex Gebrosky

West Penn Power – Latrobe SC

Lindsay Herrod

Westmoreland County Community College

John P. Kline +

Mid Penn Bank

Brian Lawrence

Westmoreland County Redevelopment Authority and Land Bank

David W. Lynn

Penn Line Enterprises Inc.

Dirk Matson

Community Volunteer

Nick Pflugh

Kennametal Inc.

Denice Robinson

Community Volunteer

Doug Sanner

Ford Office Technologies

Dan Wagner

First Commonwealth Bank

LaDawn Yesho

S&T Bank

Janet Zombek

PNC



OUR FOUNDATION PARTNERS

WE RECOGNIZE AND SALUTE THE CORPORATE AND FAMILY FOUNDATIONS THAT SUPPORT OUR WORK AND ENABLE US TO RESPOND TO THE NEEDS OF OUR COMMUNITY.

Ann & Frank Cahouet Foundation

Arconic Foundation

BNY Mellon Foundation

Buhl Foundation

Center for Philanthropy Initiatives

Ciervo Foundation

E Louis Feldman Charitable Trust

Eden Hall Foundation

Edith L. Trees Charitable Trust

FISA Foundation

Heinz Endowments

Heinz Family Foundation

Hillman Family Foundations

Jack Buncher Foundation

James M. & Lucy K. Schoonmaker Foundation

Jewish Healthcare Foundation

John E & Sue M Jackson Charitable Trust

Margaret M Patton Trust

Massey Charitable Trust

Maurice Falk Endowment Fund

McAuley Ministries (Pittsburgh Mercy)

McElhattan Foundation

McSwigen Family Foundation Fund

Omnova Solutions Foundation Inc

Pitcairn-Crabbe Foundation

PNC Charitable Trust

Richard King Mellon Foundation

Roy A. Hunt Foundation

Siemer Institute for Family Stability

Snee-Reinhardt Charitable Foundation

The Fine Foundation

The Grable Foundation

The Pittsburgh Foundation

1 Anonymous Donor



CORPORATE GIFTS TO UNITED WAY'S IMPACT FUND



THANK YOU TO THESE COMPANIES THAT ALLOCATED AT LEAST 50% OF THEIR GIFT OF \$25,000 OR MORE TO SUPPORT UNITED WAY'S IMPACT FUND.

AAA East Central

ATI Inc.

Bayer Radiology LLC

BNY Mellon

Calgon Carbon Corporation

Covestro LLC

Dollar Bank

Duquesne Light Company

Eat'n Park Hospitality Group, Inc.

Eaton Corporation

Electrical Workers and Employers of
IBEW Local Union No. 5

Elliott Group

Enterprise Holdings Inc. Foundation

Essential Foundation

Federated Hermes

FedEx Corporation

FedEx Ground

First National Bank of Pennsylvania

FirstEnergy Foundation

Giant Eagle, Inc.

Hefren-Tillotson, Inc.

Highmark Health (includes AHN)

Highmark Wholecare

Kennametal Inc.

Koppers Inc.

LANXESS Corporation

MSA Safety, Inc.

NOVA Chemicals Inc.

P. J. Dick/Trumbull/Lindy Group

Pittsburgh Penguins

Pittsburgh Pirates

Pittsburgh Steelers Sports, Inc.

PPG

The Cleveland-Cliffs Foundation

PNC

United Steelworkers

UPMC

UPS

Westinghouse Electric Company

Williams

IMPACT FUNDED AGENCIES

MEETING BASIC NEEDS

ACTION-Housing, Inc. A

Home Preservation Program, MyPlace Program, Sustainable Home Improvement Partnership - Seniors, Sustainable Home Improvement Partnership

American Red Cross of Chestnut Ridge F W

Disaster Cycle Services

Bethlehem Haven of Pittsburgh, Inc. A

Safe at Home

Blackburn Center W

Emergency Shelter for Victims of Domestic Violence, Legal and Medical Advocacy, Outreach Program to Protect Older Adults from Abuse

Catholic Charities of the Diocese of Greensburg

F W

Information and Referral

Catholic Charities of the Diocese of Pittsburgh Inc. A

Allegheny County Outreach Intensive Case Management

Center for Community Resources, Inc. B

Utility Integrated Point of Contact (UIPOC)

Center for Hearing & Deaf Services, Inc. A F W

Sign Language and Interpretation Supports Program

Central Westmoreland Habitat for Humanity A

Homeowner Program of Central Westmoreland Habitat for Humanity

Community Human Services A

Home Matters Coalition, CHS In-Home Services Program

Domestic Violence Services of Southwestern PA F

Fayette Safe House/Shelter Program

Fayette County Community Action Agency Inc F

Food Bank, Nurse Family Partnership

Helping All Victims in Need HAVIN A W

Direct Services/Connecting People with Basic Resources

Interfaith Volunteer Caregivers of Fayette Inc F

Home Supportive Services

Jean B. Purvis Community Health Center B

Dental Care for the Uninsured

Jewish Community Center of Greater Pittsburgh (JCC)

AgeWell Pittsburgh

Jewish Family and Community Services A

SOS Women

Laurel Area Interfaith Volunteer Caregivers W

Laurel Area Interfaith Volunteer Caregivers, Inc.

Lifesteps B

Lifesteps Adult Day Health Services (ADHS)

The Lighthouse Foundation B

Transitional Housing, The Lighthouse Foundation Food Pantry

Macedonia Family & Community Enrichment Center (FACE) A

Lifeline, Meals on Wheels Greater Pittsburgh, Active for Life Senior Center

Neighborhood Legal Services Association A

Project Shape: Stabilizing Housing and Preventing Eviction via Community Partnerships

Northern Area Mutli-Service Center of Allegheny Co. A

Caregiver Solutions

Providence Connections, Inc. A

Real Help Real Time for Financially Struggling Families

South Hills Interfaith Movement A

Smart Investments (SI)

SPHS Connect Inc. W

Welcome Home Shelter

The Union Mission W

Emergency Men's Shelter

Vintage A

Better Choices, Better Health

Wesley Church Health Center, Inc. F W

Access to Free Health/Dental Care

Wesley Family Services A W

In Service of Seniors - Family Services of WPA and North Hills Community Outreach, Open Your Heart to a Senior

Western Pennsylvania Diaper Bank F W

WPA Diaper Bank Service Expansion - Westmoreland

Westmoreland County Food Bank W

WCFB Outreach and Expansion Program

Women's Center and Shelter of Greater Pittsburgh A

Preventing Homelessness through Expanded Housing Advocacy for Victims of Violence, Immediate Needs Coordination to Victims of Intimate Partner Violence

YWCA Greater Pittsburgh A

Women's Impact Network (WIN)



MOVING TOWARD FINANCIAL STABILITY

ACHIEVA A

Benefits Counseling & Future Planning for Caregivers

Adelphi F W

Increasing Innovation in Career Exploration

Catholic Charities of the Diocese of Pittsburgh Inc., Butler Office B

Pregnancy and Parenting Supportive Services

Center for Community Resources, Inc. B

Volunteer Income Tax Assistance (VITA) Program

Community Kitchen Pittsburgh A

CKP Culinary Arts School

Feeding the Spirit W

Rent Assistance for Homeless and At Risk

Jewish Family and Community Services A

WorkAble, EmployAble

Just Harvest Education Fund A

Strengthening the Safety Net

Lifesteps B

Lifesteps Transition Services...The Next Step

Mon Valley Initiative A

MVI Employment & Financial Coaching Services

New Century Careers, Inc. W

MANUFACTURING 2000 (M2K) Machinist Training expansion into Westmoreland County

North Hills Community Outreach A

Siemer Eviction Prevention Project

Travelers Aid Society of Pittsburgh A

Collaborative Employment Transportation Assistance Program/Financially Struggling Families Network, United for Women Network/Womens Transportation Assistance Program

Urban League Of Greater Pittsburgh A

Urban League Jobs Training Support Program

Veterans Leadership Program of Western Pennsylvania, Inc. A

Project Journey, Operation Back Home: Serving Disabled Veterans

Westmoreland Community Action W

Volunteer Income Tax Assistance (VITA)

YMCA of Greater Pittsburgh A

Hope For All (HFA)

YWCA Butler B

Getting Ahead in a Just-Gettin'-By World

IMPACT FUNDED AGENCIES (CONT.)

BUILDING FOR SUCCESS IN SCHOOL & LIFE

A+ Schools Pittsburgh's Community Alliance For Public Education A

Informing, Engaging, and Mobilizing Parents

ACHIEVA W

Preschool Readiness Program

The Arc of Butler County B

AERO (Activities, Employment, and Recreational Opportunities) Afterschool Transition Program

Big Brothers Big Sisters of the Laurel Region

F W

One-to-One Mentoring

Blackburn Center W

Dating Violence, Sexual Abuse and Bullying Prevention Programs in Schools

Boys & Girls Clubs of Western Pennsylvania A

After School Excellence (ASE)

CASA of Westmoreland, Inc. W

CASA Child Well Being Advocacy

Center for Hearing & Deaf Services, Inc. F W

Outreach Activities for Deaf Youth and their Families/Friends

Center of Life A

Supporting Youth Enrichment, Family Strengthening, and Community-Empowerment Initiatives

Community Care Connections, Inc. B

Camp Apple with Teen Camp Apple

Community Resources of Fayette County, Inc. F

The Act of Raising Safe Kids Program

Connecting2Tomorrow, Inc. B

Connecting2Tomorrow Mentoring Program

Early Learning Connections B

Child Care Scholarships, Inclusive Child Care

Glade Run Lutheran Services B

Glade Run Adventures

Greensburg YMCA W

Greensburg YMCA Early Childhood Learning Center

Gwen's Girls A

Black Girls Advocacy and Leadership Alliance (BGALA)

Helping All Victims in Need HAVIN A W

Sexual Harassment Prevention Program

Homewood Children's Village A

Cradle to Career Pipeline

Human Services Center Corporation A

Human Services Center Youth Enhancement Services

KidsVoice A

Fostering School Success

Macedonia Family & Community Enrichment Center (FACE) A

Family Capacity Program

Mental Health America of Southwestern PA W

Suicide Awareness and Prevention in Schools

Neighborhood Learning Alliance A

College in High School

Valley Points Family YMCA A W

Valley Points Family YMCA Early Learning Centers

Wesley Family Services W

The Incredible Years

YWCA Greater Pittsburgh A

STEM Stars / LaunchPad

YWCA Westmoreland County W

Children's Education

COMMUNITY PARTNERSHIPS

Allies for Children A

Matched Support Funding

American Red Cross, Southwestern Pennsylvania Chapter A

Emergency/Disaster Services & Coordination

Boy Scouts of America Laurel Highlands Council F W

Supporting Scouting Programs Serving our Areas Most At-risk, Disadvantaged Youth

Program to Aid Citizen Enterprise A

Capacity Building for Community-Based Organizations

Salvation Army of Western PA A

Emergency/Disaster Services & Coordination

THESE COMPANIES AND ORGANIZATIONS ARE THE ENGINE THAT FUEL OUR WORK THROUGH THEIR EMPLOYEE FUNDRAISING CAMPAIGNS. WE SALUTE THEIR DEDICATION TO OUR COMMUNITY AND THEIR ABILITY TO CONSISTENTLY FOSTER A GIVING CULTURE IN THEIR WORKPLACE.

PNC	First National Bank of Pennsylvania	Calgon Carbon Corporation
UPMC	Buchanan Ingersoll & Rooney PC	Westinghouse Electric Company
Highmark Health (includes AHN)	Naval Nuclear	Jones Day
PPG	Ernst & Young LLP	Duquesne University
FedEx	Schneider Downs	Wabtec Corporation
Hefren-Tillotson, Inc.	Bank of America	Enterprise Rent-A-Car Company
University of Pittsburgh	Reed Smith LLP	LANXESS Corporation
Giant Eagle, Inc.	Arconic	United Way of Southwestern Pennsylvania
Covestro LLC	Dollar Bank	Elliott Company
K & L Gates LLP	Eat'n Park Hospitality Group, Inc.	Costco
Pittsburgh Steelers Sports, Inc.	Equitrans Midstream	Curtiss-Wright
ATI, Inc.	Koppers Inc.	Bechtel Plant Machinery, Inc.
Federated Hermes	Northwestern Mutual	Henderson Brothers
Deloitte	NOVA Chemicals Inc.	Clark Hill PLC
Peoples	Duquesne Light Company	First Commonwealth Bank
West Penn Power	Highmark Wholecare	Centene Corporation
Kennametal Inc.	United States Steel Corporation	Glimcher Group
KPMG	Pittsburgh Regional Transit	United Steelworkers
UPS	Carnegie Mellon University	Electrical Workers and Employers of IBEW
PwC	BNY Mellon	Local Union No. 5
Eaton Corporation	P.J. Dick/Trumbull/Lindy Group	AAA East Central
Williams	Dentons Cohen & Grigsby	Goldberg Persky & White PC
MSA Safety, Inc.	Bayer Corporation / Bayer Radiology LLC	City of Pittsburgh



TOP WORKPLACE CAMPAIGNS (CONT.)

Erie Insurance Group

Columbia Gas

Jewish Healthcare Foundation

Oxford Development Company

ECHO Realty, L.P.

ATI Flat Rolled Products

Blank Rome LLP

KeyBank

Cliffs

Alstom

Northwest Bank

HarbisonWalker

Tucker Arensberg, P.C.

Gateway Financial Group, Inc.

NexTier Bank

The Techs

Peak Performance Management

Pittsburgh Pirates

Pittsburgh Penguins

Calumet-Penreco LLC

Allegheny Intermediate Unit

Carmeuse North America

My Benefit Advisors

Babb, Inc.

Massaro Construction Group

S&T Bank

Alcoa, Inc.

Maier Duessel

Reiferson Dee PLC

Target

Excelsa Health

Wesley Family Services





For the twelfth consecutive year, United Way of Southwestern Pennsylvania has earned a four-star rating from Charity Navigator, the nation's leading philanthropic evaluator. To review our Form 990 and other financial reports, please visit uwsdpa.org/united-way-financials.

UNITED WAY OF SOUTHWESTERN PENNSYLVANIA

Allegheny County Office

1250 Penn Avenue
Pittsburgh, PA 15222
412-261-6010

Butler County Office

407A W. Jefferson Street
Butler, PA 16001
724-285-4883

Westmoreland County Office

1011 Old Salem Road
Greensburg, PA 15601
724-834-7170



United Way of
Southwestern Pennsylvania

United Way of Southwestern
Pennsylvania serves Allegheny,
Armstrong, Butler, Fayette and
Westmoreland Counties